

Overview about the work of Dirk Roessler

References: Sculptures

Figure of Jean-Claude van Damme

Made of Super Sculpey (scaled 1:10, 6 inches high). Van Damme as "Kurt Sloane" in the film "Kickboxer" defeating Tong Po in the showdown.



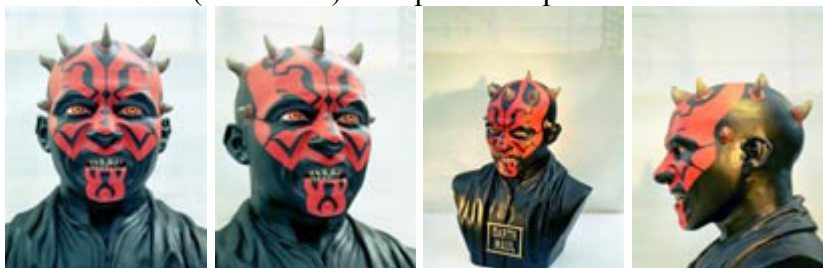
Freddy Krueger bust

Made of resin (scaled 1:1). Sculpted with plasticine. Inspired by the fantastic make up from "A Nightmare on Elm Street 4 - The Dream Master".



Darth Maul bust

Made of resin (scaled 1:1). Sculpted with plasticine.



Overview about the work of Dirk Roessler

Robert Englund bust

Inspired by the introduction scene of the film "Freddy vs. Jason" where the actor Robert Englund appears as the still unburned Freddy Krueger. Made of resin, sculpted with Super Sculpey (scaled 1:3).



Orang Utang bust

Made of resin, sculpted with clay (10 inches high).



Kraftwerk

The famous German electronic pop band (scaled 1:6). Made of "decapitated" Barbie-Kens. Heads made of resin, sculpted with plasticine.



Overview about the work of Dirk Roessler

Human Skull

Anatomically high detailed skull with moveable lower jaw (scaled 1:1). Made of resin, sculpted with clay.



Werewolf Skull

Anatomically high detailed skull with moveable lower jaw (scaled 1:1). My own werewolf design. Made of resin, sculpted with clay.



Yoda figure

Made of resin and fabrics, sculpted with plasticine (scaled 1:1, a little more than 2 feet of height).



Pictures by courtesy of Steegmüller-Skulpturen

Overview about the work of Dirk Roessler

Gnomes

Various gnomes (from 8-10 inches of height) sculpted with Super Sculpey as prototypes for bronze cast.



Pictures by courtesy of Steegmüller-Skulpturen

Stop-Motion figures

Some German broadcasting moderators from "Radio Bremen 4" made as caricature Stop-Motion figures used for a TV commercial. Made of foam latex and aluminium wire. Sculpted with plasticine. These characters have also been resculpted as prototypes for promotional give-aways (pencil holders and key chain figures).



Pictures by courtesy of Steegmüller-Skulpturen

Overview about the work of Dirk Roessler

Hans Clarin bust

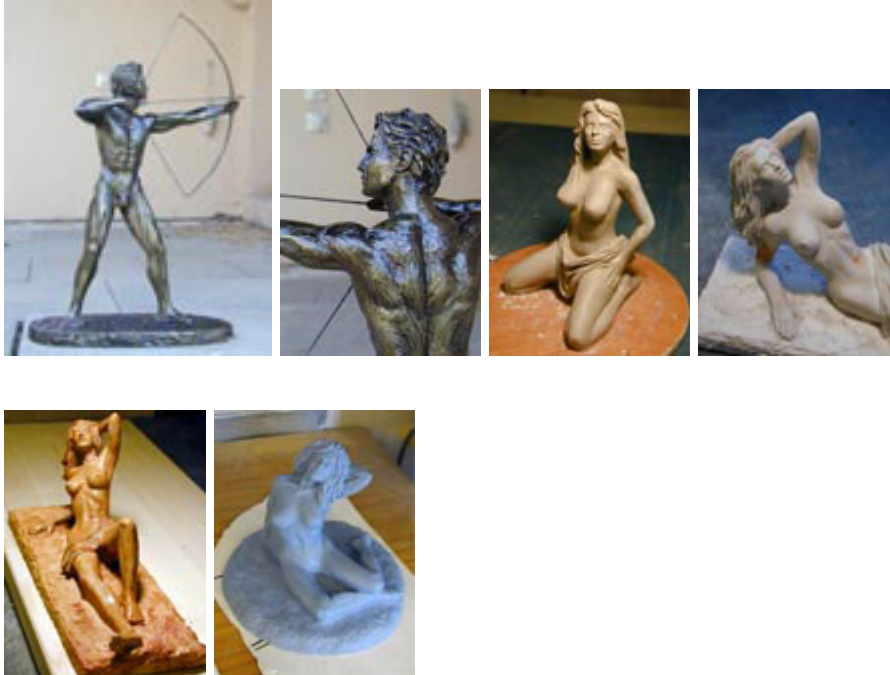
The famous German actor Hans Clarin (scaled 1:2). Sculpted with clay and plaster.



Pictures by courtesy of Steegmüller-Skulpturen

Various nudes

Sculpted with clay as prototypes for bronze cast. Scaled 1:10 except the archer (1:5)



Pictures by courtesy of Steegmüller-Skulpturen

Overview about the work of Dirk Roessler

Loriot character

Inspired by the funny character "Dr. Kloebner" (one of the two men sitting in a bath tub) designed by the famous German comedian and cartoonist Loriot. Made of styrofoam and plaster as prototype for bronze cast (2 feet high).



Pictures by courtesy of Steegmüller-Skulpturen

Caricatures of German celebrities

Boris Becker, Juergen Trittin, Dieter Bohlen and Stefan Raab. Oversized heads (scaled 2:1) for a funfair attraction. Made of resin, sculpted with clay.



Pictures by courtesy of Steegmüller-Skulpturen

Tour stage decoration for the band "Kastelruther Spatzen"

Portrait relief of the seven musicians, inspired by Mount Rushmore. Made of styrofoam, 17 meters wide, 4 meters high.



Pictures by courtesy of Steegmüller-Skulpturen

Overview about the work of Dirk Roessler

Worm and slug

Two oversized animals for garden decoration. Made of styrofoam and plaster as prototypes for bronze cast.



Pictures by courtesy of Steegmüller-Skulpturen

Aquarius

An Aquarius sitting in a wooden jar as a garden fountain. Made of styrofoam and plaster as prototypes for bronze cast.



Pictures by courtesy of Steegmüller-Skulpturen

Lion

Sculpted with clay as a prototype for bronze cast (10 inches of length).



Pictures by courtesy of Steegmüller-Skulpturen

Overview about the work of Dirk Roessler

References: Make Up SFX

2 Zombies

Facial parts made of foam latex, teeth made of resin. Sculpted with plasticine.



Werewolf

Facial parts made of foam latex, teeth made of resin. Sculpted with plasticine.



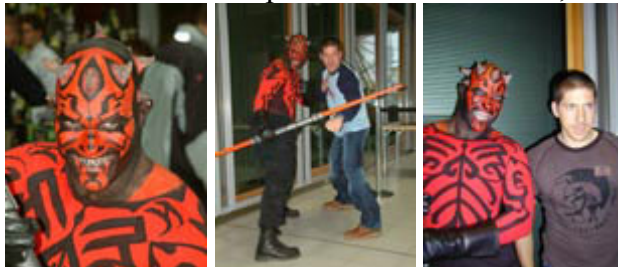
Freddy Krueger

Halloween make up made of foam latex. Sculpted with plasticine



Darth Maul

Water based make up. Horns made of latex, sculpted with plasticine.



Overview about the work of Dirk Roessler

References: Make Up SFX

Zombie

Half head mask made for a live actor of a haunted attraction. Made of latex, sculpted with plasticine.



Pictures by courtesy of Steegmüller-Skulpturen

Werewolf

Full head mask with moveable jaw and upper lips (moved by nylon strings through an under construction underneath the rubber skin). Made of latex, resin and artificial fur. Sculpted with clay.



Orc

Full head latex mask for live action role play (L.A.R.P.). Sculpted with plasticine.



Overview about the work of Dirk Roessler

Wrestler

Special mask that covers the whole head except the face (the face got a foam latex SFX make up). Made of soft polyurethane foam, sculpted with clay.



Cyclops dragon

Full head mask with moveable eye, nostrils and tongue (moved by nylon strings through an under construction underneath the skin). Made of soft polyurethane foam and resin. Sculpted with clay.



Mr. Bean

Full head mask for a promotion campaign. Made of foam latex and artificial hair. Sculpted with plasticine.

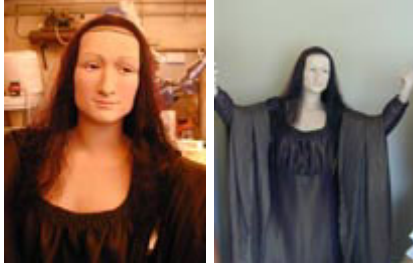


Overview about the work of Dirk Roessler

References: Thema Park Work

Mona Lisa

Made for the German theme park "Tripsdrill". Made of resin and glass fibre, sculpted with plasticine (lifesize).



Pictures by courtesy of Steegmüller-Skulpturen

A childs head for a theme park figure

Made of resin, sculpted with plasticine (scaled 1:1)



Pictures by courtesy of Steegmüller-Skulpturen

Various hands for theme park figures

Made of resin, sculpted with plasticine (scaled 1:1)



Pictures by courtesy of Steegmüller-Skulpturen